



GOOD MORNING  
Have Good Trading Day

FRIDAY



Price is what you pay.  
Value is what you get.

- Warren Buffet



## MARKET PLUSE

### INDIAN INDICES

NAME	CMP	NET CH.	%
SENSEX	27115	+283	+1.06
NIFTY	8174	+83	+1.03

### INDIAN ADR'S

SYMBOL	CLOSE	GAIN/ LOSS %
DRREDDY	53.42	+0.81
HDFCBANK	57.71	+1.19
ICICIBK	10.29	+1.58
INFY	32.17	+0.78
TATAMOTOR	35.37	+1.84
WIPRO	12.19	+1.84

### FII AND MF ACTIVITY

SYMBOL	In Crs.
FIIs Eq (Provisional)	-784.73
FIIs Index Future	144.57
FIIs Index Options	1697.43
FIIs Stock Future	1090.54
FIIs Stock Options	1.18
DII's Eq (Provisional)	1110.01

### CURRENCY

RBI RATE	18-JUN-2015
RUPEE - \$	63.8495
EURO	72.4564
YEN 10	51.8900
GBP	100.9971

## MARKET PLUSE

### GLOBAL INDICES

NAME	CMP	NET CH.	%
DOW	18115	+180	+1.00
NASDAQ	5132	+68	+1.34
NIKKEI	20152	+161	+0.81
HANG SENG	26999	+304	+1.14
SGX NIFTY	8197	+35	+0.43

### WORLD COMMODITIES

FUTURE	U\$\$	CHANGES
CRUDE	60.40	-0.05
NATURAL GAS	2.769	-0.008
GOLD	1199.10	-2.90
SILVER	16.090	-0.063
COPPER	2.6080	+0.0020

### WORLD EVENTS

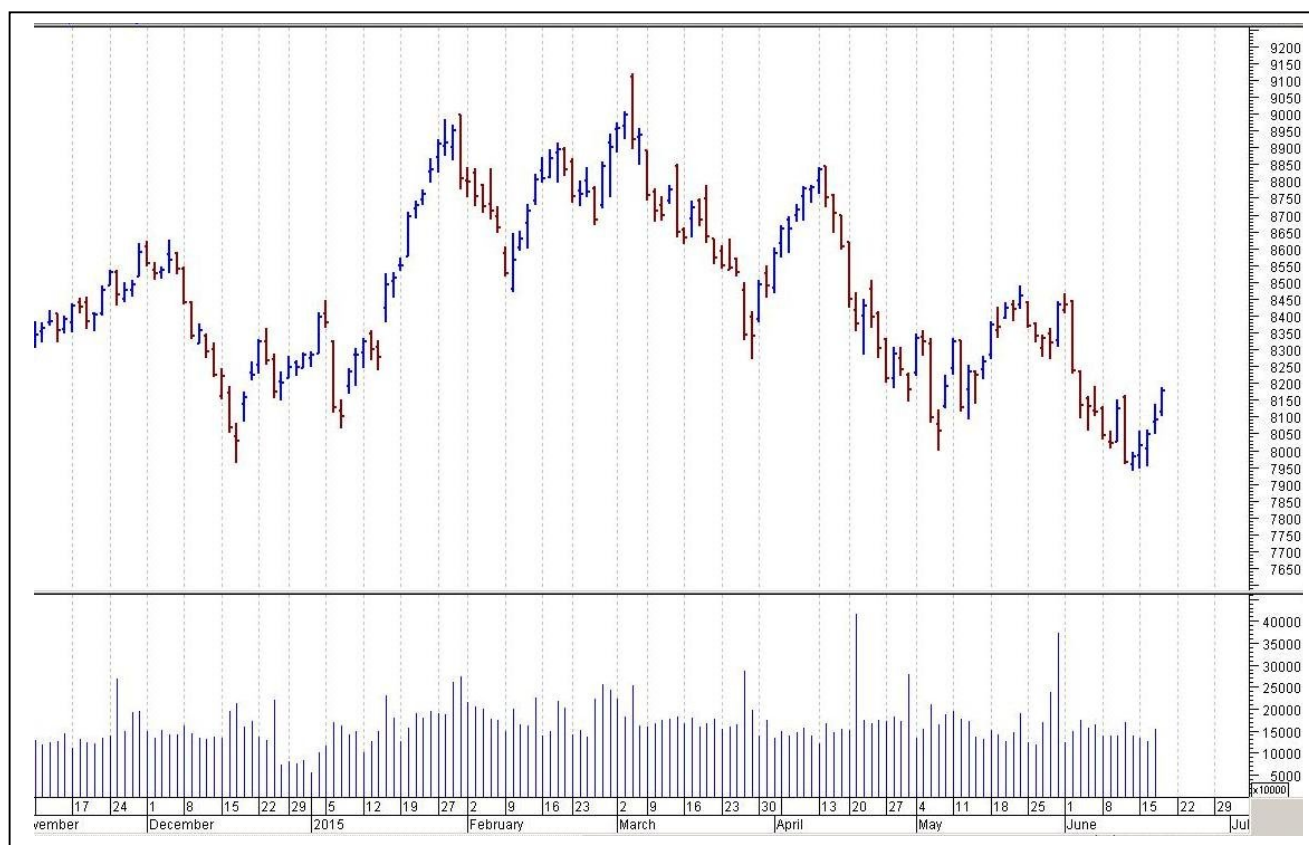
- US: NIL
- UK:Public Sector Net Borrowing

## TOP STORY

- Essar Oil Targets 5000 retail outlets (BS). Currently has 1500 operational and 1400 under implementation.
- DB Realty in JV With ECC, Konark For Residential Project 'DB Skypark' In Mumbai.
- Dish TV QIP Launched; QIP Size Is \$50-75 m: Sources. Apollo May Sell 2.93-4.4% Stake In Dish TV Via Block Deal In Range Of `102-109.70/Sh.
- Suprajit Engineering Says -Have Acquired 51% Stake In Phoenix Lamps
- Tourism Finance Corporation puts land parcel worth `24 cr on sale
- GAIL Signs MoU With South Delhi Municipal Corp (SDMC) To Provide Civic Services In Bhikaiji Cama Place
- Praksh Industries Board To Meet On June 24 To Decide Date Of FCCB Issue
- Castex Tech Says Reports Suggesting Trouble With Bond Holders Are Not Correct & Non-factual



## NIFTY CHART



## MARKET COMMENTARY

Indian markets closed with significant gains in Thursday's trade, making it their fifth straight day of gains, with Sensex surging past 27100 mark, while Nifty posted near three digit rally. There was broad based buying and some of the bluchips like, Reliance Industries and HDFC Bank witnessed brisk buying that helped markets end near high points of the day. Traders were encouraged with Finance Minister Arun Jaitley assurance to the global investors that efforts are being made to allay their concerns on expediting reform process, tax regime and policy stability by the Narendra Modi government. Jaitley has said that India's 7.5 per cent economic growth rate is not its "best potential growth rate" and there is "restlessness" in the Narendra Modi-led government to boost economic growth. For today's trade Nifty likely to trade in the range between 8195 – 8225 in the upper side and 8160 – 8140 in the lower side.

### MARKET LEVELS

	CMP	SUPPORT LEVELS				RESISTANCE LEVELS			
NIFTY	8174	8160	8140	8110	8060	8195	8225	8240	8270
USDINR									





### FUTURES CORNER

SCRIPS	CLOSE	SUPPORT	TARGET		REMARKS
		STOP LOSS	T1	T2	
MARUTI	3858.95	3551	3874	3895	TRADING CALL
L&TFH	62.85	61.8	64.5	65.5	TRADING CALL
JSWSTEEL	833.4	824	847	858	TRADING CALL

### EQUITY CORNER

SCRIPS	CLOSE	SUPPORT	TARGET		REMARKS
		STOP LOSS	T1	T2	
FORTIS	164.65	162	172	178	TRADING CALL
RAJESHEXPO	257.1	255	272	285	TRADING CALL

### DELIVERY BASED CALL / INVESTMENT CALL

SCRIPS	CMP	SUPPORT	TARGET		REMARK
		STOP LOSS	T1	T2	

### BULK DEALS (BSE)

SCRIP	CLIENT NAME	BUY/SELL	QUANTITY	PRICE
NIL				

### BULK DEALS (NSE)

SCRIP	CLIENT NAME	BUY/SELL	QUANTITY	PRICE
NIL				

### SCRIP'S IN F&O BAN

(To resume for normal trading below 80% of market wide limit required)

AMTEKAUTO, CENTURYTEX, IBREALEST, UNITECH



NIFTY 50 STOCKS: SUPPORT & RESISTANCE						
Symbol	Close	Support 1	Support 2	Pivot Point	Resistance1	Resistance2
ACC	1413.75	1404.30	1394.85	1413.45	1422.90	1432.05
AMBUJACEM	222.15	220.27	218.38	222.38	224.27	226.38
ASIANPAINT	728.95	720.48	712.02	727.42	735.88	742.82
AXISBANK	550.05	546.70	543.35	550.75	554.10	558.15
BAJAJ-AUTO	2396.00	2372.60	2349.20	2392.50	2415.90	2435.80
BANKBARODA	138.65	137.00	135.35	139.65	141.30	143.95
BHARTIARTL	426.45	415.75	405.05	424.60	435.30	444.15
BHEL	243.25	241.23	239.22	243.57	245.58	247.92
BPCL	833.80	820.20	806.60	828.70	842.30	850.80
CAIRN	178.70	177.50	176.30	178.60	179.80	180.90
CIPLA	607.05	598.57	590.08	610.58	619.07	631.08
COALINDIA	394.55	390.67	386.78	396.48	400.37	406.18
DRREDDY	3377.45	3351.50	3325.55	3382.60	3408.55	3439.65
GAIL	399.45	396.55	393.65	400.15	403.05	406.65
GRASIM	3366.55	3349.03	3331.52	3368.52	3386.03	3405.52
HCLTECH	913.75	905.12	896.48	912.83	921.47	929.18
HDFC	1213.30	1202.33	1191.37	1210.97	1221.93	1230.57
HDFCBANK	1019.60	1006.63	993.67	1015.22	1028.18	1036.77
HEROMOTOCO	2526.30	2513.95	2501.60	2530.45	2542.80	2559.30
HINDALCO	120.00	118.23	116.47	119.42	121.18	122.37
HINDUNILVR	862.60	857.13	851.67	862.57	868.03	873.47
ICICIBANK	303.35	301.90	300.45	303.80	305.25	307.15
IDEA	174.10	170.53	166.97	172.77	176.33	178.57
IDFC	149.00	148.25	147.50	149.25	150.00	151.00
INDUSINDBK	825.55	815.33	805.12	823.17	833.38	841.22
INFY	1001.95	995.85	989.75	1001.90	1008.00	1014.05
ITC	301.90	299.93	297.97	302.17	304.13	306.37
KOTAKBANK	1307.40	1293.13	1278.87	1303.77	1318.03	1328.67
LT	1717.15	1707.43	1697.72	1718.47	1728.18	1739.22
LUPIN	1794.85	1744.33	1693.82	1777.67	1828.18	1861.52
M&M	1253.95	1243.52	1233.08	1255.48	1265.92	1277.88
MARUTI	3861.10	3818.08	3775.07	3855.02	3898.03	3934.97
NMDC	117.65	116.32	114.98	117.53	118.87	120.08
NTPC	136.60	135.93	135.27	136.92	137.58	138.57
ONGC	312.85	307.00	301.15	311.10	316.95	321.05
PNB	131.50	129.77	128.03	132.38	134.12	136.73
POWERGRID	141.95	140.97	139.98	141.83	142.82	143.68
RELIANCE	978.95	946.97	914.98	964.48	996.47	1013.98
SBIN	258.10	255.30	252.50	258.00	260.80	263.50
VEDL	173.20	172.13	171.07	173.72	174.78	176.37
SUNPHARMA	856.05	846.70	837.35	854.35	863.70	871.35
TATAMOTORS	445.45	435.40	425.35	441.45	451.50	457.55
TATAPOWER	73.10	72.17	71.23	72.83	73.77	74.43
TATASTEEL	303.70	300.90	298.10	303.70	306.50	309.30
TCS	2530.05	2509.93	2489.82	2528.12	2548.23	2566.42
TECHM	541.20	537.65	534.10	543.65	547.20	553.20
ULTRACEMCO	2798.70	2765.20	2731.70	2796.60	2830.10	2861.50
WIPRO	556.10	547.07	538.03	553.73	562.77	569.43
YESBANK	824.65	811.73	798.82	820.07	832.98	841.32
ZEEL	347.00	343.58	340.17	348.67	352.08	357.17



## CORPORATE ACTION / BOARD MEETINGS

NSE Download Ref.No.:NSE/CML/29902:- Face Value Split - JMT Auto Limited (JMTAUTOLTD) from Rs. 10 to Rs. 2 wef June 25, 2015

NSE Download Ref.No.: NSE/SURV/29940:- Mastek Limited (Symbol- MASTEK) shall be transferred from trade for trade segment (series: BE) to rolling segment (series: EQ) with effect from June 26, 2015 (Friday).

NSE Download Ref.No.:NSE/CML/29963:- Suspension of trading in Securities of Companies for Non-Compliance of certain clauses of the Listing Agreement: Kingfisher Airlines Limited, UB Engineering Limited and Varun Industries Limited wef June 23, 2015

NSE Download Ref.No.:NSE/CML/30000:- Change in Name of the Company Welspun Projects Limited to Welspun Enterprise Limited. Symbol will change from WELPROJ to WELENT wef June 24, 2015

### BOARD MEETINGS

COMPANY NAME	DATE	PURPOSE	RS. PER SH.
NAVINFLUOR	19-Jun-15	Dividend	8.5
HINDUNILVR	19-Jun-15	Annual General Meeting/ Dividend	9
ADI	19-Jun-15	Annual General Meeting/ Dividend	2.5
BIRLACORPN	19-Jun-15	Annual General Meeting/ Dividend	6
ESSELPACK	19-Jun-15	Annual General Meeting/ Dividend	1.6
PSB	19-Jun-15	Annual General Meeting/ Dividend	0.6
MAHABANK	19-Jun-15	Annual General Meeting/ Dividend	0.8
PNB	22-Jun-15	Annual General Meeting/ Dividend	3.3
CORPBANK	22-Jun-15	Annual General Meeting/ Dividend	1.4
UCOBANK	23-Jun-15	Annual General Meeting/ Dividend	2
INDIANB	23-Jun-15	Annual General Meeting/ Dividend	4.2
VASCONEQ	23-Jun-15	Rights 14:19 @ Premium Rs 5 Per Share	
CENTRALBK	23-Jun-15	Annual General Meeting/ Dividend	0.5
ASIANPAINT	24-Jun-15	Annual General Meeting/ Dividend	4.3
CANFINHOME	24-Jun-15	Annual General Meeting/ Dividend	7
SRS LTD	25-Jun-15	Bonus 1:1	
CANBK	25-Jun-15	Annual General Meeting/ Dividend	10.5
JMTAUTOLTD	25-Jun-15	Face Value Split From Rs 10 To Rs 2	
KKCL	25-Jun-15	Interim Dividend - Rs 35/- Per Share	35
OBEROIRLTY	25-Jun-15	Dividend	2
AJANTPHARM	25-Jun-15	Annual General Meeting/ Dividend	6
ALKYLAMINE	26-Jun-15	Annual General Meeting/ Dividend	4

## NEWS & RUMOURS:

- Gold (Spot Dollar) major support = \$1168/\$1146 & Resistance = \$1225/\$1249.
- Crude oil range->\$55 to \$65.
- U.S. Stocks Advance as Data Support Fed's Gradual View on Rates: - U.S. stocks rose, after Federal Reserve Chair Janet Yellen reiterated that interest rates would be increased gradually, while data showed signs that inflation remains subdued.
- Gold futures up 1% after Fed tempers rate hike expectations: - Gold prices rose sharply on Thursday, as investors pushed back expectations for higher U.S. interest rates following the conclusion of the Federal Reserve's policy meeting. Dollar weakness usually benefits gold, as it boosts the metal's appeal as an alternative asset and makes dollar-priced commodities cheaper for holders of other currencies. The dollar weakened across the board on Wednesday after the Fed lowered both its U.S. growth forecast and its interest-rate projections, prompting investors to push back expectations on the timing of an initial rate hike.
- Fed Chair Janet Yellen said the central bank wanted to see "more decisive evidence" of sustained growth before raising rates, but acknowledged that the economy has "expanded moderately" after a weak first quarter.
- Natural gas futures extend losses after storage data: - Natural gas futures extended losses on Thursday, despite data showing that U.S. natural gas supplies rose less than expected last week.
- WTI oil futures off the highs with U.S. supply outlook in focus: - West Texas Intermediate oil futures trimmed gains on Thursday, as concerns that U.S. shale production could rebound in the months ahead weighed.

## TRENDS & OUTLOOK – DATE: 19- June- 2015

### PRECIOUS METALS:

COMMDITY (MCX)	S2	S1	PIVOT POINT	R1	R2
GOLD (Aug)	26666	26901	27120	27401	27666
SILVER (July)	34800	36000	37100	38055	39310

### BASE METALS

COMMDITY (MCX)	S2	S1	PIVOT POINT	R1	R2
COPPER (June)	357	362	369	374	381
ZINC (June)	126.30	129.20	132	134.10	136.20
LEAD (June)	110.10	112.30	115	117.30	119.10
NICKEL (June)	774	790	815	832	851

### ENERGY

COMMDITY (MCX)	S2	S1	PIVOT POINT	R1	R2
CRUDE OIL (June)	3600	3720	3838	3939	4030
NATURAL GAS (June)	167	172	180	185	191

### DATE TALKS : TODAY'S ECONOMIC DATA :

Monetary Policy Statement of JPY, BOJ Press Conference, ECOFIN Meetings, and FOMC Member Williams Speaks.





Registered Office

Indira House, 3rd Floor, 5 Topiwala Lane,  
Opp. Lemington Road Police Station, Grant Road (East), Mumbai - 400007.

Corporate Office

'Ramavat House' E-15, Saket Nagar, Indore - 452018 (M.P.)

Customer Care

Tel: +91-731-4097170/ 71/ 72/ 73/ 74 M. +91 93031 72345

Email: [customercare@indiratrade.com](mailto:customercare@indiratrade.com) [www.indiratrade.com](http://www.indiratrade.com)



INSTITUTIONAL DEALING UNIT

Africa House, 5, Topiwalla Lane, Lamington Road, Mumbai, 400007

Tel: +91 22 30080678 Fax : +91 22 23870767 Email : [ie@indiratrade.com](mailto:ie@indiratrade.com)

**Disclaimer**

This report is for private circulation within the Indira Group. This report is strictly confidential and for information of the selected recipient only and may not be altered in any way, transmitted to, copied or distributed, in part or in whole, to any other person or to the media or reproduced in any form. This report should not be construed as an offer or solicitation to buy or sell any securities or any interest in securities. It does not constitute a personal recommendation or take into account the particular investment objectives, financial situations, or any such factor. The information, opinions estimates and forecasts contained here have been obtained from, or are based upon, sources we believe to be reliable, but no representation of warranty, express or implied, is made by us to their accuracy or completeness. Opinions expressed are our current opinions as of the date appearing on this material only and are subject to change without notice.